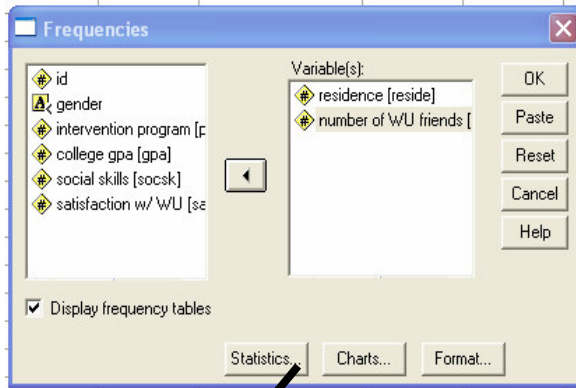


**Frequencies Table (& optional statistics):** Select *Analyze, Descriptive Statistics, Frequencies.*



**Statistics**

		residence	number of WU friends
N	Valid	20	20
	Missing	0	0
Mean		1.45	5.70
Median		1.00	6.00
Mode		1	2
Std. Dev.		.510	2.774

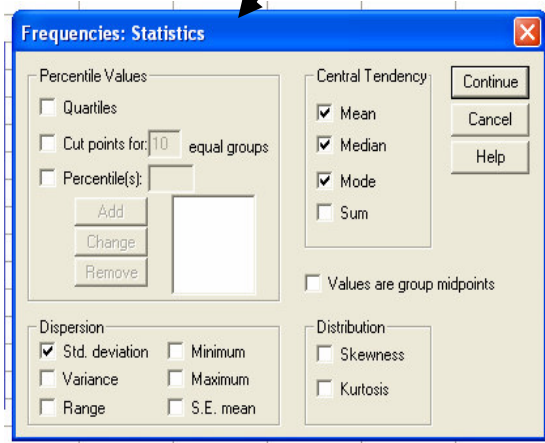
**Frequency Table**

**residence**

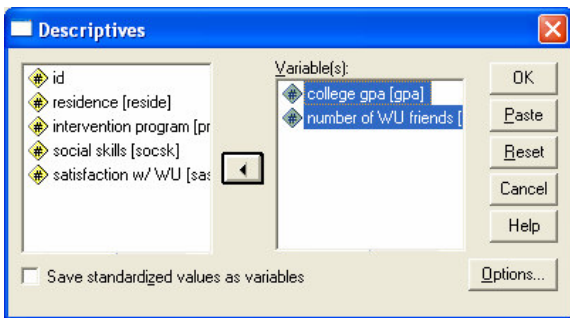
		Freq	Perc	Valid Percent	Cumulative Percent
Valid	on campus	11	55.0	55.0	55.0
	off campus	9	45.0	45.0	100.0
	Total	20	100.0	100.0	

**number of WU friends**

		Frequency	Percent	Valid Percent	Cumulative Percent
Valid	2	4	20.0	20.0	20.0
	3	2	10.0	10.0	30.0
	4	1	5.0	5.0	35.0
	5	2	10.0	10.0	45.0
	6	3	15.0	15.0	60.0
	7	2	10.0	10.0	70.0
	8	2	10.0	10.0	80.0
	9	2	10.0	10.0	90.0
	10	2	10.0	10.0	100.0
	Total	20	100.0	100.0	



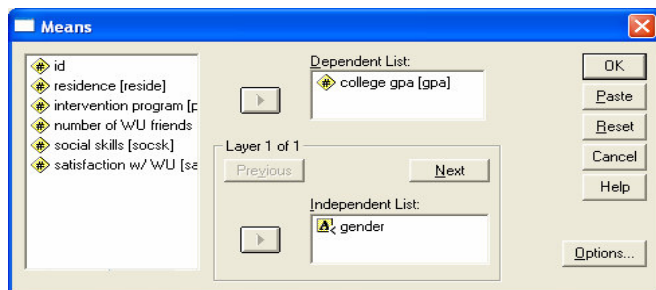
**Descriptive Statistics:** Select *Analyze, Descriptive Statistics, Descriptives..*



**Descriptive Statistics**

	N	Min	Max	Mean	Std. Deviation
college gpa	20	1.20	3.90	2.6750	.81491
number of WU friends	20	2	10	5.70	2.774
Valid N (listwise)	20				

**Compare Means:** Select *Analyze, Compare Means, Means.*



**college gpa**

gender	Mean	N	Std. Deviation
female	2.7750	12	.59715
male	2.5250	8	1.09512
Total	2.6750	20	.81491